

## Aligner Chewies

Patent Number: ZL 2018 2 1528611.3



- Mint flaver  Juicy peach flaver
- Grape flaver  Green apple flaver
- Lemon flaver  Watermelon flaver

- Help aligner tray fit teeth closer to make sure reach preset orthodontics force.
- Bite for 5-10 minutes to avoid braces face.
- Gum bite and handle are designed separately,convenience and hygiene.
- Triangular prism shape uses wedge-force principle to fit aligner tray for adjacent anterior or premolar region.
- Cylinder is used to fit aligner tray in molar region with greater occlusal force,and it can also be used to exercise bite muscle.
- Elliptical cylinder is mainly used to fit aligner tray in occlusal surface of posterior teeth.



Item: MP03

	Box	
Packing 1	3 pcs/box,400 boxes/ctn	2 pcs/pouch,12 pouches/bag, 30 bags/ctn
Packing 2	2 pcs/box, 400 boxes/ctn	3 pcs/pouch,12 pouches/bag, 30 bags/ctn

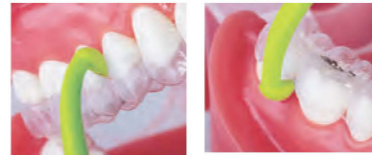
## Retainer Retrievers

Patent Number: ZL 2019 3 0018952.X



- Red  Orange  Yellow
- Green  Blue  Rose

- Retainer retrievers help patients remove appliances cleanly and efficiently.
- Helps patients remove appliances from the buccal side cleanly and efficiently.
- The ring handle is easy to hold by hand when operating.
- This handy tool features specially designed hooks which help to remove clear retainers or aligners with ease.



Item: MP04  
Packing: 1 pc/unit,12 units/bag,30 bags/ctn  
Carton Size: 290X260X230mm  
Weight: 2.1 KGS

## Dry Field System Tubing

Patent Number: ZL 2016 2 1097848.1



- White (L)  Green (S)

- The Dry Field System completely eliminates saliva and fully exposes both arches making it ideal for all bonding applications,The system is easy to assemble and be inserted and used by a single operator.
- Set salivary absorption,retractor,tongue guard in one.



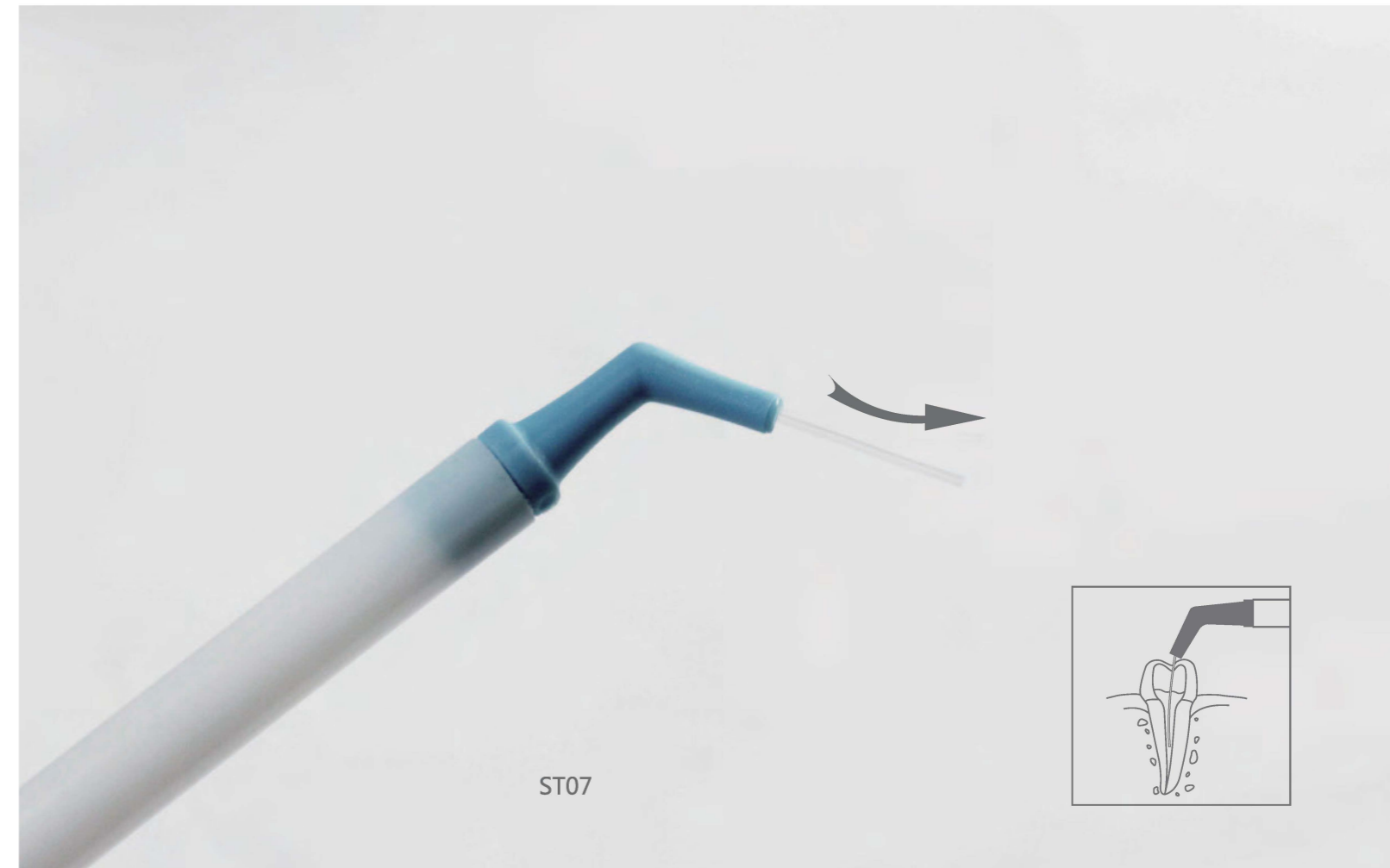
Item: CR08  
Packing: (L)1 set/box,48 boxes/ctn,(S)1 set/box,50 boxes/ctn  
Carton Size: (L)440X440X250mm,(S)460X350X260mm  
Weight: (L)5.8 KGS,(S)5 KGS

## Dry Field System Component



Item: CR0802  
Packing: 1 set/box  
Remark: Components consist tongue guard,connection arm, position block,2 pcs of silicone tubing and Y-connector.

# DISPOSABLE SALIVA EJECTORS



ST07

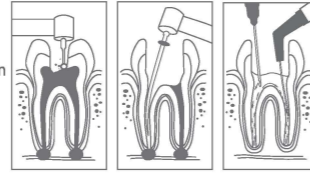


### Endodontic Aspirator Tip

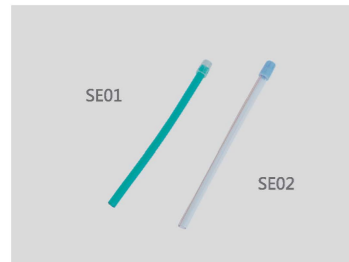


■ ST07, The soft aspirating tip is designed with multi-directional flexibility. Without entering into the end of root canals, it can be used the principle of negative pressure to suck out fluids in the cavities, canals, multiple canals and lateral branches.

**Item:** ST07  
**Packing:** 1pc/bag,20bags/box,20boxes/ctn  
**Carton Size:** 320X190X260mm  
**Weight:** 3 KGS  
**Remark:**tip diameter0.6mm



### Disposable Saliva Ejectors



■ The head is designed to side opening, which can increase the safety and comfort of patients. It contains metal wire, which facilitates the fixation of disposable saliva ejectors.

**Item:** SE01/SE02  
**Specification:** 150X6.5mm  
**Packing:** 100 pcs/bag,20 bags/ctn  
**Carton Size:** 350X290X240mm  
**Weight:** 10 KGS

Blue ■  
Green ■



### Evacuation Tip



■ ET01,the hole design can relieve the discomfort of patients under the condition of strong inhalation.

**Item:** ET01  
**Specification:** 148X11mm  
**Packing:** 100 pcs/bag,20 bags/ctn  
**Carton Size:** 480X335X280mm  
**Weight:** 8 KGS  
**Inner:** 10mm  
**Remark:** Vented/Non-Vented



### Surgical Aspirator Tip



■ ST01/ST02/ST03,universal disposable surgical aspirator tips. Use with 11mm Suction Valves.

ST01(Green) ■ ST02(White) □ ST03(Blue) ■  
**Item:** ST01/ST02/ST03  
**Caliber:** (ST01)5.8mm,(ST02)3.8mm,(ST03)2.5mm  
**Packing:** 25 pcs/bag,100 bags/ctn  
**Carton Size:** (ST01/ST03)400X400X370mm,(ST02)430X430x290mm  
**Weight:** 11.6 KGS  
**Remarks:** (ST01)1/4" Green,(ST02)1/8" White,(ST03)1/16" Blue



### Surgical Aspirator Tip



■ ST06A can use to match with ST01/ST02/ST03;  
ST06A+ST06B can be used to match with ST04.

**Item:** ST04  
**Caliber:** 2.5mm  
**Packing:** 1 pc/bag,25 bags/box,40 boxes/ctn  
**Carton Size:** 500X430X320mm  
**Weight:** 6.3 KGS  
**Remarks:** one box of aspirator tips match with pair of Surgical Aspirator Adaptor  
**Item:** ST06A/ST06B  
**Name:** Surgical Aspirator Adaptor  
**Packing:** 50 pcs/bag,60 bags/ctn  
**Carton Size:** (ST06A)430X320X290mm(ST06B)420X270X230mm  
**Weight:**(ST06A)13.7KGS(ST06B)9.5KGS



# IMPRESSION TRAY

